



Grinder System Application

Hobs & Bandsaw Milling Cutters

Description

Resharpener hobs and bandsaw milling cutters.

Application

Flute sharpen cylindrical or tapered OD Bandsaw Milling Cutters.

Straight or helical flutes.

Right and left hand cutters.

CNC grinding provides increased productivity, precision and operating convenience with simplified programming.

CNC grinding with high pressure coolant offers increased accuracy, performance and tool life.

Process

Bandsaw milling cutters are mounted on an arbor and secured in the machine between a hydraulic tail stock and pneumatic chuck

An integrated probe is used to check the axial and radial position of the cutter. A standard CBN (plated or resin bond) dish wheel is used.

Material

High speed steel.

Cycle Time

Actual cycle times depend on stock removal and tool geometry.

Cycle times for standard sizes are as little as seven minutes.

Surface Finish

Flute face finishes up to arms are possible.

Machine Features and Benefits

Available on Huffman HS-150, HS-190 and HS-200 Series Grinders.

Five CNC axes are used (three linear, two rotary).

Optional Huffman Graphic User Interface offers sequential programming, graphical display and on-screen prompts.

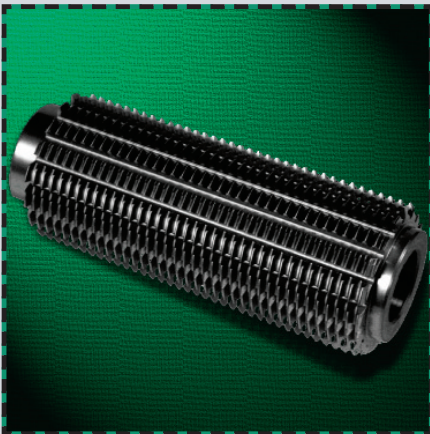
Rugged construction enhances system precision, durability and up-time.

Optional scale feedback (linear and rotary axes) for increased accuracy.

Available integrated wheel truing.

Cycle times are significantly lower than other resharpener choices/methods.

Higher machine accuracy produces better cutter geometry resulting in longer tool life and better part quality.



506_BMC/01.01/500



1050 Huffman Way • Clover, SC • USA
Tel/803.222.4561 • Fax/803.222.7599
www.huffmancorp.com