

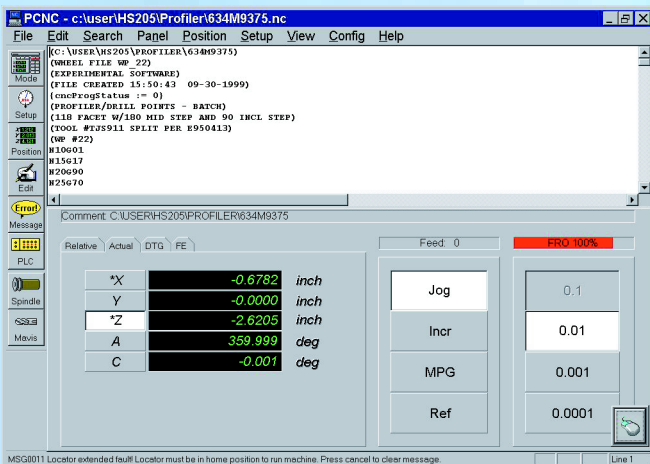
# OAC Huffman Open Architecture Control



*Touchscreen, LCD panel allows for quick and easy data entry and eliminates the need for a mouse.*

Maximum performance, capability and flexibility is possible with Huffman's Open Architecture Control (OAC). This powerful operator interface combines high-speed Pentium® II Processor speed with standard PC hardware operating on Windows NT® operating system. Bringing together many of today's open standards, Huffman OAC offers many performance benefits including:

- Simple and cost-effective RAM, hard disk and CPU upgrades using commercial off-the-shelf components.
- Increased productivity through optimized cycle time when running latest Huffman application software.
- PC technology eliminates non-productive time spent waiting for DNC uploads and downloads.
- Less operator training needed with easy-to-use Huffman Graphical User Interface (GUI) software. Touchscreen, flat-panel screen eliminates need for mouse and allows for quick operator response.
- Greater flexibility with SPC data collection capability allows customized operator panels with simultaneous processing through Windows NT.
- Less downtime with instantaneous service and remote diagnostics capability via internal modem and pcANYWHERE® software.
- Enhanced connectivity and increased uptime through remote networking capability and machine diagnostic system.
- Increased security with password protection for machine function and parameter accessibility.
- Less time spent updating software with CD-ROM upgrades.



*The PCNC operator view screen simplifies CNC control by reducing keystrokes and streamlining production.*





# Specifications

## Industrial PC

- Pentium II processor @ 350MHz
- 4GB hard drive
- 128 MB RAM
- AGP graphics
- 56K modem
- 24X CD ROM
- Ethernet
- 14.5-inch touchscreen LCD monitor

## Delta Tau PMAC2 Motion Controller

- 60MHz Motorola DSP
- Custom gate arrays
- Directly interfaced high-speed safety I/O (limit, home, drive enable)
- Fully-digital interface to servo drives
- Plugs directly into a PC ISA slot

## Servo Drives and Motors

- Yaskawa Sigma Series brushless AC servos with PWM interface and digital current feedback

## Profibus Distributed I/O

- Utilizes Profibus, the world's largest open bus protocol install base with multiple manufacturers
- Hilscher Profibus Master plugs directly into a PC PCI slot
- Wago high-density I/O used in electrical cabinet and operator's pendant
- Turck busstop station I/O used where IP67 protection required

Windows NT is a registered trademark of Microsoft Corporation.  
Pentium is a registered trademark of Intel Corporation.  
pcANYWHERE is a registered trademark of Symantec Corporation.

## PLC

- Uses ASAP's ASIC-200 for motion and I/O drivers, DDE, OLE and a shared database with SQL and ODBC support
- Supports the IEC-61131 programming standard (Ladder Logic, Sequential Function Chart, Structured Text, Instruction List)
- Actively updated display components for easy debugging
- Watch window for observing and forcing I/O

## NC Interface

- Huffman PCNC Graphical User Interface (GUI) supports RS-274 programming (M and G codes)
- Main screen with toolbar and all components needed for automatic operation
- Manual operation panel
- Additional position displays
- Wheel wear compensation, macro and fixture offset screens
- Additional background editor
- Message display
- Auxiliary panels for spindle, coolant and laser status

## Remote Service and Diagnosis Support

- Ability to remotely diagnose and correct problems via modem or Internet using pcANYWHERE
- Huffman service personnel able to view remote screen for diagnoses and correction of problem
- Customer and Huffman personnel share mouse and can communicate via common screen
- Supports file transfer for software updates
- Minimizes customer downtime
- One year warranty

## Huffman Corporation

1050 Huffman Way • Clover, SC 29710 • USA  
803-222-4561 • 803-222-7599 Fax  
www.huffmancorp.com • huffman@huffmancorp.com

